

# *Mecklenburg County's 7 R's of Waste Reduction*

**Goal: To reduce the amount of waste sent to Mecklenburg County landfills!**

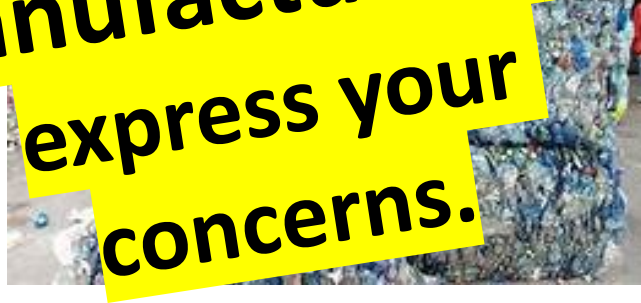
---

Presented by Mecklenburg County Waste Reduction Educators: Maitri Meyer & Walker Spruill

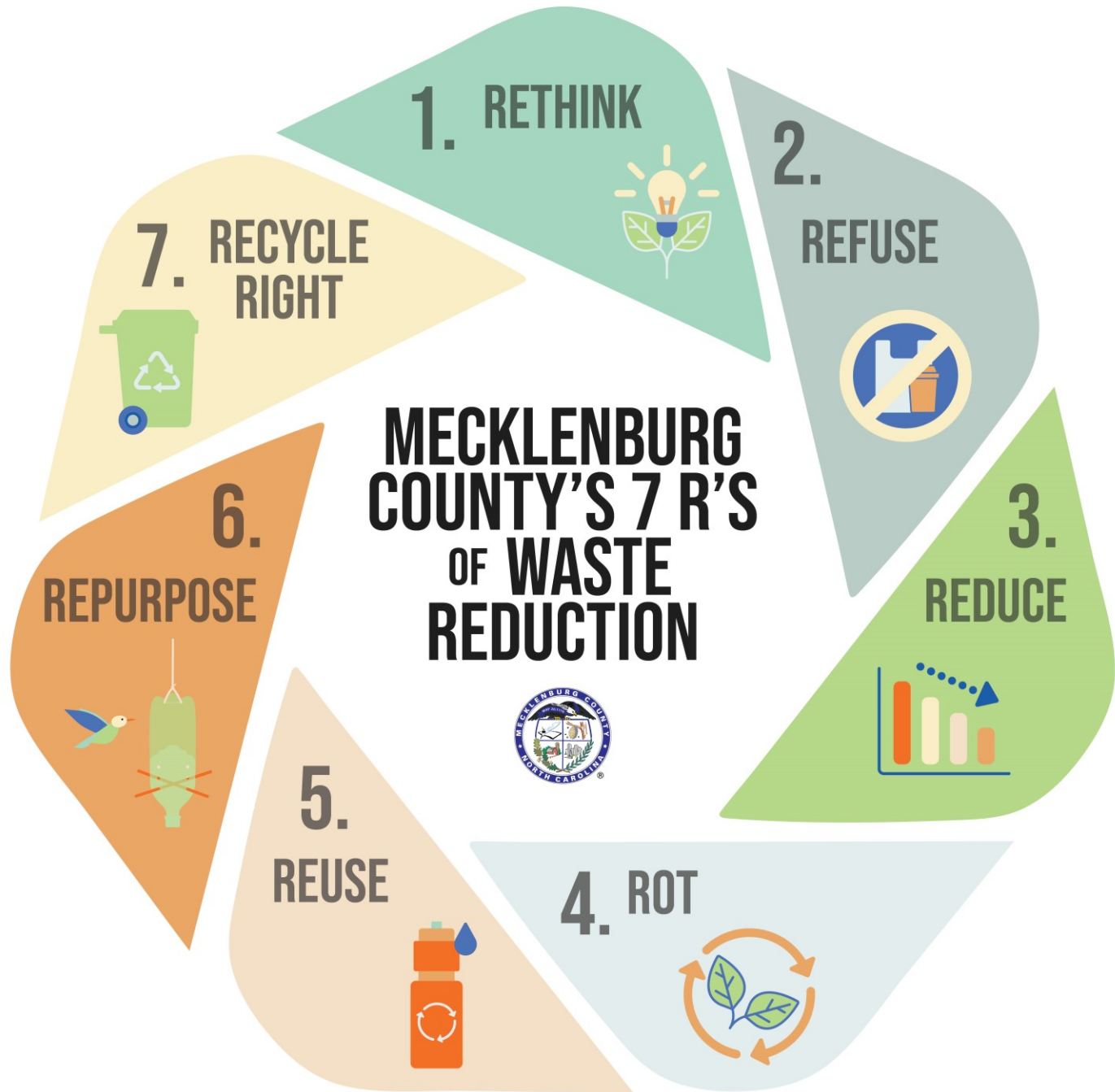


# Producer Responsibility

A strategy (sometimes legislative) to add up and hold producers responsible for all of the environmental costs related to their products' life cycle, production through disposal.



**If you aren't happy with the packaging, please contact the manufacturers to express your concerns.**



# 1. RETHINK



**ReThink**  
**Disposable**  
STOP WASTE BEFORE IT STARTS

## 2. REFUSE



### 3. REDUCE



BUY USED/RESALE

NEW  TO YOU

BUY LESS OFTEN

**BULK BUY!!**

REPAIR/REFURBISH



BUY EXPERIENCES NOT STUFF

**BUY LESS,  
LIVE MORE**

# 4. ROT



# 5. REUSE

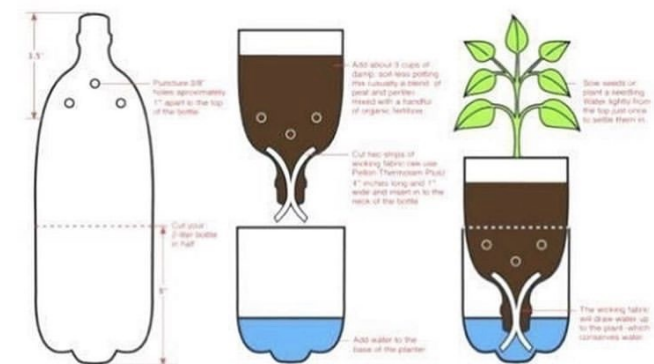




# 6. REPURPOSE

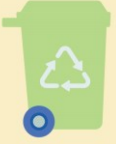


## How to make a 2-Liter SIP (sub-irrigated planter)



## DIY Self-Watering Seed Starter Pots HOWTO?

7. RECYCLE  
RIGHT



LOOSE  
IN THE  
CART,  
NEVER  
IN  
BAGS  
CLEAN  
DRY  
EMPTY



**DO NOT  
CONTAMINATE  
RECYCLING**

**ONLY place the items pictured below in your recycling bin!**



PAPER



PLASTIC BOTTLES & JUGS  
with NECKS



CARDBOARD



CANS



CARTONS



GLASS BOTTLES

**WHEN IN DOUBT LEAVE IT OUT!**

# Thank You & Remember to **Recycle Right!**

## To Contact Mecklenburg County Solid Waste:

---

Phone: **311 or 980-314-3867 INFO LINE**

Email: [SolidWaste@MeckNC.gov](mailto:SolidWaste@MeckNC.gov)

Facebook: [facebook.com/MeckCountyWasteReduction/](https://facebook.com/MeckCountyWasteReduction/)

Website: [WipeOutWaste.com](http://WipeOutWaste.com)

When in  
doubt,  
throw it out  
OR  
**GIVE US A  
SHOUT!**



Any Questions?



We will answer!



[WIPEOUTWASTE.COM](http://WIPEOUTWASTE.COM)

